



**TRUE POSITION**  
TOOLS



**CABINET HARDWARE JIGS**



**SINCE 1996**

**CABINET LIGHT JIGS**



# CABINET HARDWARE JIG ORIGINAL

TP-CHJ

Accurately Install handles or knobs on virtually any cabinet door and drawer front. Eliminate tedious hand measuring or homemade templates and quickly install your cabinet pulls and knobs. Designed for professionals and DIY'ers alike to make your hardware installation fast, easy, and worry free.

## INCLUDES ITEMS

TP-CHJ + TP-CHJ-CASE



## RIGHT. LEFT. REVERSIBLE.

Reversible design doesn't require adjusting. This allows you to flip the tool for opposite cabinet doors offering a seamless drilling experience. Includes a guide for drawer fronts and an end-stop for doors. Install cabinet hardware in minutes, not hours!

## SET HARDWARE SPACING



## SET LOCATION

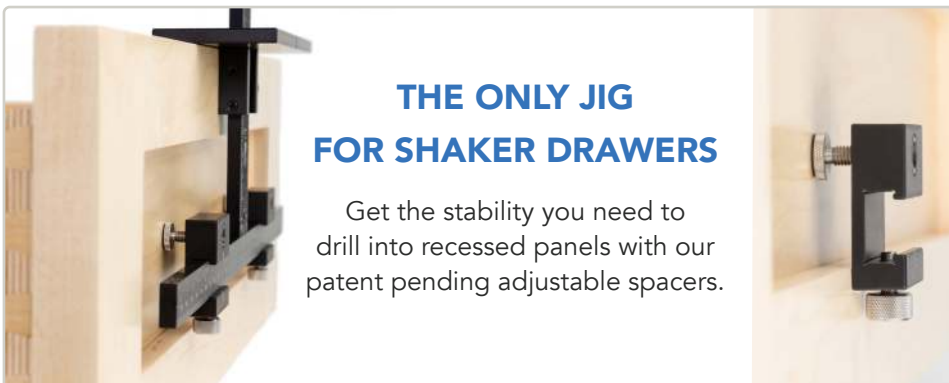


## HOLD & DRILL



## THE ONLY JIG FOR SHAKER DRAWERS

Get the stability you need to drill into recessed panels with our patent pending adjustable spacers.



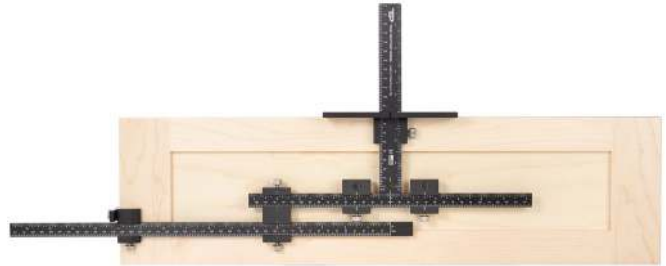
# CABINET HARDWARE JIG PRO

TP-CHJ-PRO

The Cabinet Hardware Jig PRO includes the Rapid Center Extension (TP-CHJ-RC) eliminating the need to center your jig on every drawer front which greatly speeds up hardware installation. By providing an additional stop, you can leave it set after your first drawer and go down a bank of drawer fronts without having to find center on each panel.

## INCLUDES ITEMS

TP-CHJ + TP-CHJ-RC + TP-CHJ-CASE



## RAPIDLY CENTER ON REPEAT DRAWER WIDTH SETTINGS

On drawer fronts & doors up to 42"



# CABINET HARDWARE JIG MAX

TP-CHJ-MAX

The Cabinet Hardware Jig MAX expands on our innovations by addressing virtually every handle size available (up to 38" pulls and 42" wide drawers), plus the ability to install shelf pins. A must-have tool for any professional hardware installation.

## INCLUDES ITEMS

TP-CHJ + TP-CHJ-LPRC + TP-CHJ-CASE



## LONG HARDWARE MADE EASY

Quickly install hardware up to 38" C-C

## IDEAL FOR:

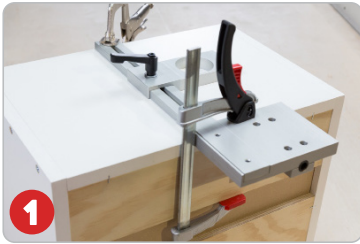
- + Hardware up to 38" C-C
- + Shelf Pins with 32mm Spacing





# CABINET LIGHT JIG MAX

TP-CLJ-MAX



1

CLAMP JIG IN DESIRED LIGHT LOCATION



2

DRILL LIGHT HOLE TO DESIRED DEPTH USING ADJUSTABLE STOP



3

DRILL WIRE HOLE UNTIL DRILL BIT REACHES LIGHT HOLE



4

RUN WIRE THROUGH HOLE



5

PRESS IN PUCK LIGHT

Our Cabinet Light Jigs simplify the task of cabinet lighting and give a clean custom look. By concealing light wires within 5/8" or 3/4" material, you can install cabinet lights in seconds.



INCLUDES ITEMS  
TP-CLJ-MAX + TP-CLJ-CASE



- Revolutionary design eliminates light rails / false bottom / cabinet build-ups
- Included drill bits cover 95% LED light sizes
- Forstner bits for pucks: 2-1/4", 2-1/8", Drill bit for wires: 3/8" x 16"

## CABINET LIGHT JIG

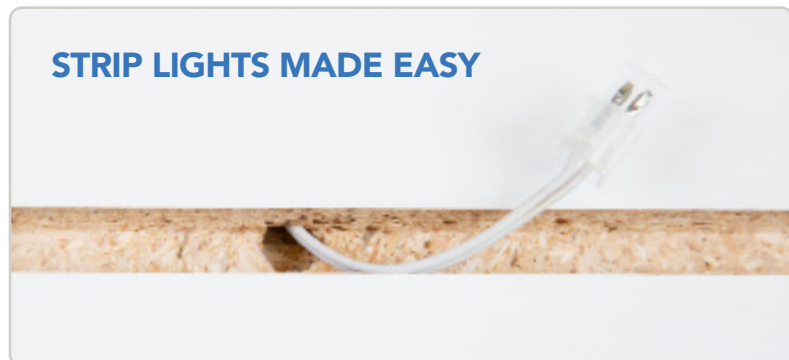
TP-CLJ



INCLUDES ITEMS  
TP-CLJ + TP-CLJ-CASE

- Easily install a light wire within the structural panels of the cabinet
- Eliminates the need for a light rail or double bottom
- Includes Hard Case, Jig Body, & Drill bit for wire (3/8" x 16")

STRIP LIGHTS MADE EASY



# PARTS DIAGRAM

INCLUDED PARTS VARY BY MODEL

INCLUDED IN ALL JIGS



Blow Molding Carrying Case



Shaker Drawer Spacers



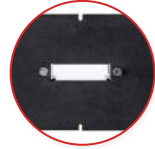
Hardware Spacing Pins



Magnetic Bushing Covers



5mm Drill Bit



Center Notch on Front & Back for Drawer Fronts

Hardened Aluminum T-Square

Large Stop

End Stop

Drill Guide

Case-Hardened Steel Bushings



Shaker Drawer Spacers

English & Metric Ruler

Stainless Steel Thumb Screws



Rapid Center Extension

Double Bracket

Long Pull & Shelf Pin Extensions

5mm Case-Hardened Steel Bushings

Spaced at 32mm



Allen Key



5mm Depth Stop Collar



# THE LAST JIG YOU'LL EVER NEED.

## HINGE PLATE DRILLING



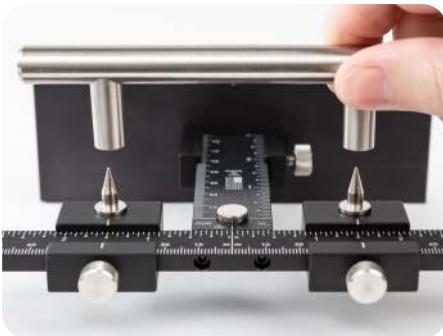
TP-CHJ is designed to install 32mm hinge plates as well as drill 32mm shelf pin holes in assembled cabinets. For extensive shelf pins, we recommend our extension set (TP-CHJ-LP).

## PORTABLE SHELF PIN HOLES



## HARDWARE SPACING PINS

Find and set cabinet pull spacing quickly and accurately. Included with all Cabinet Hardware Jigs.



## DOUBLE HOLE DRILL GUIDE SET

TP-CHJ-DHG



For installation of 16mm and 32mm C-C pulls and knobs on cabinet doors and drawer fronts. Compatible with all True Position Tools Hardware Jigs.



SCAN FOR DIGITAL INSTRUCTIONS



TAG US IN YOUR PROJECTS

@TRUEPOSITIONTOOLS

